

**PLEASE CHECK WWW.MOLEX.COM FOR LATEST PART INFORMATION**

**Part Number:** [0872800600](#)  
**Status:** **Active**  
**Description:** 2.00mm (.079") Pitch Cable Holder, for Discrete Wire, Flat Cable and Ribbon Cable, 6 Circuits

**Documents:**

[3D Model](#) [Product Specification PS-87130-001 \(PDF\)](#)  
[Drawing \(PDF\)](#) [RoHS Certificate of Compliance \(PDF\)](#)

**Agency Certification**

CSA LR19980

**General**

Product Family Ribbon Cable / Wire Trap Connectors  
 Series [87280](#)  
 Component Type One Piece  
 Glow-Wire Compliant No  
 Product Name Board-In, Cable Holder

**Physical**

Circuits (Loaded) 6  
 Circuits (maximum) 6  
 Color - Resin Natural  
 Entry Angle Vertical  
 Flammability 94V-0  
 Lock to Mating Part None  
 Material - Resin Polyester  
 Number of Rows 1  
 PCB Locator Yes  
 PCB Retention Yes  
 PCB Thickness Recommended (in) 0.062 In  
 PCB Thickness Recommended (mm) 1.60 mm  
 Packaging Type Bag  
 Pitch - Mating Interface (in) 0.079 In  
 Pitch - Mating Interface (mm) 2.00 mm  
 Pitch - Term. Interface (in) 0.079 In  
 Pitch - Term. Interface (mm) 2.00 mm  
 Polarized to Mating Part Yes  
 Polarized to PCB No  
 Shrouded Fully  
 Stackable No  
 Surface Mount Compatible (SMC) No  
 Temperature Range - Operating -40°C to +105°C  
 Wire Insulation Diameter 1.42mm (.056") max.  
 Wire Size AWG 26, 28  
 Wire/Cable Type Discrete Wire, Ribbon Cable

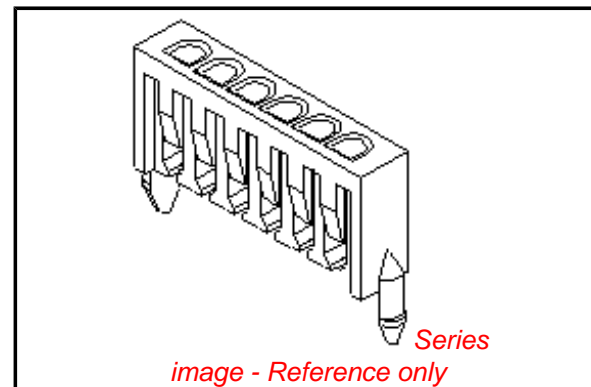
**Electrical**

Current - Maximum per Contact 1A  
 Voltage - Maximum 125V

**Material Info**

**Reference - Drawing Numbers**

Product Specification PS-87130-001  
 Sales Drawing SD-87280-\*\*00



**EU RoHS**

**ELV and RoHS Compliant**  
**REACH SVHC Contains SVHC: No**  
**Halogen-Free Status**  
**Not Reviewed**

**China RoHS**



**Need more information on product environmental compliance?**

Email [productcompliance@molex.com](mailto:productcompliance@molex.com)  
 For a multiple part number RoHS Certificate of Compliance, [click here](#)

Please visit the [Contact Us](#) section for any non-product compliance questions.

**Search Parts in this Series**

[87280Series](#)

**Mates With**

N/A

**Use With**

Discrete Wire, Flat Cable, or Ribbon Cable

This document was generated on 04/19/2010

**PLEASE CHECK [WWW.MOLEX.COM](http://WWW.MOLEX.COM) FOR LATEST PART INFORMATION**

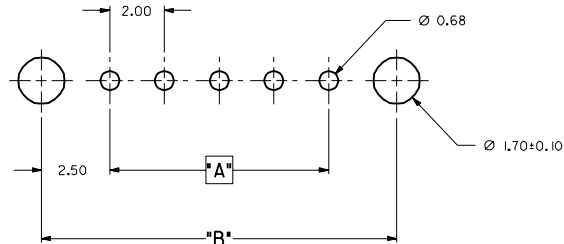
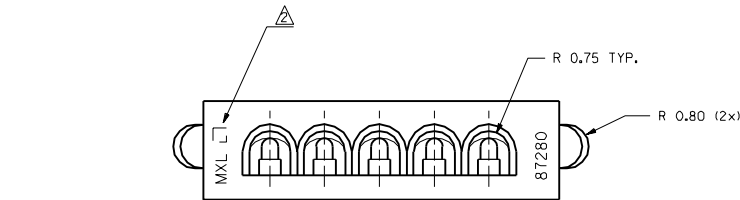
ENG. NO SD-87280-\*\*-00

EDP NO.

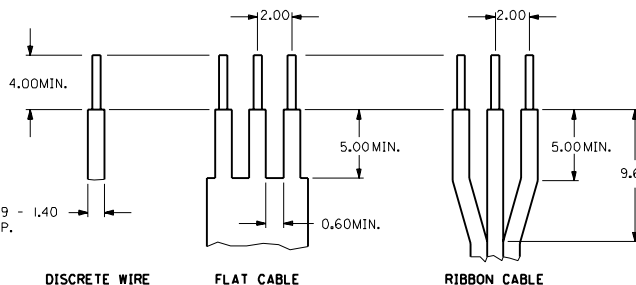
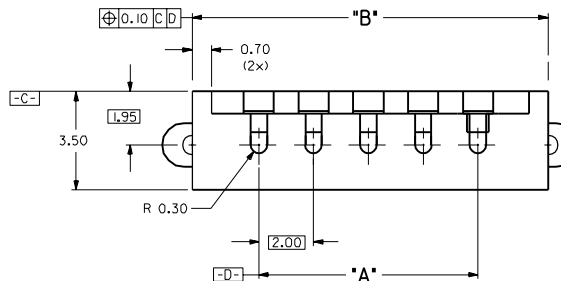
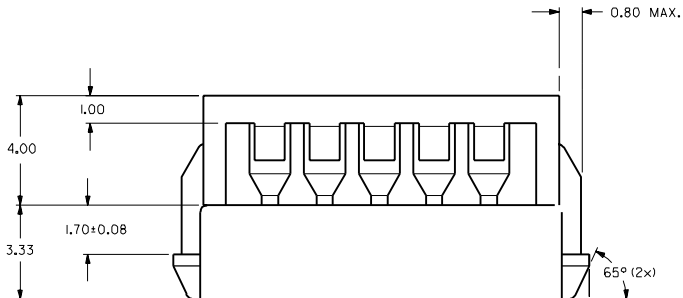
SIMILAR ITEM

PROJECT NO. S87280.DGN

DO NOT SCALE DRAWING



RECOMMENDED P.C. BOARD LAYOUT  
PCB THICKNESS = 1.57mm



CABLE DIMENSIONS REF.

NOTES:

- FOR ILLUSTRATION PURPOSES, 5 CIRCUITS HAS BEEN SHOWN.
- MXL LOGO, CAVITY IDENT, ENG. NO. TO BE AS LARGE AS POSSIBLE AND AS LOCATED.
- PARTS TO BE FLAT WITHIN .0045mm/mm AT WIRE ENTRY POSITION.
- THIS WIRE HOLDER IS FOR USE WITH 28 TO 26 AWG WIRE.

MM

ENG. NO.	CKT SIZE	"A" MM	"B" MM
SD-87280-0200	2	2.00	7.00
SD-87280-0300	3	4.00	9.00
SD-87280-0400	4	6.00	11.00
SD-87280-0500	5	8.00	13.00
SD-87280-0600	6	10.00	15.00
SD-87280-0700	7	12.00	17.00
SD-87280-0800	8	14.00	19.00
SD-87280-0900	9	16.00	21.00
SD-87280-1000	10	18.00	23.00
SD-87280-1100	11	20.00	25.00
SD-87280-1200	12	22.00	27.00
SD-87280-1300	13	24.00	29.00
SD-87280-1400	14	26.00	31.00
SD-87280-1500	15	28.00	33.00

MATERIAL : VALOX 310, UL 94V-0 COLOR : NATURAL				<b>MOLEX</b> <b>F.E.M.L South</b> SHEET 1 OF 1	
FINISH : _____					
WIRE RANGE : _____				GENERAL TOLERANCES ANGLE : ± 1° DIM : ± .25/0.10	
INS. RANGE : _____				ENG. NO. SD-87280-**-00 REV B	
LTR REVISION RECORD		DR CHK DATE		DRAWN BY 900419 T A Y	
REVISION RECORD		DATE		APPR'D BY 900430 N K WONG	
REVISION RECORD				SCALE 6 : 1	
REVISION RECORD				TITLE : 2.0mm CABLE HOLDER	